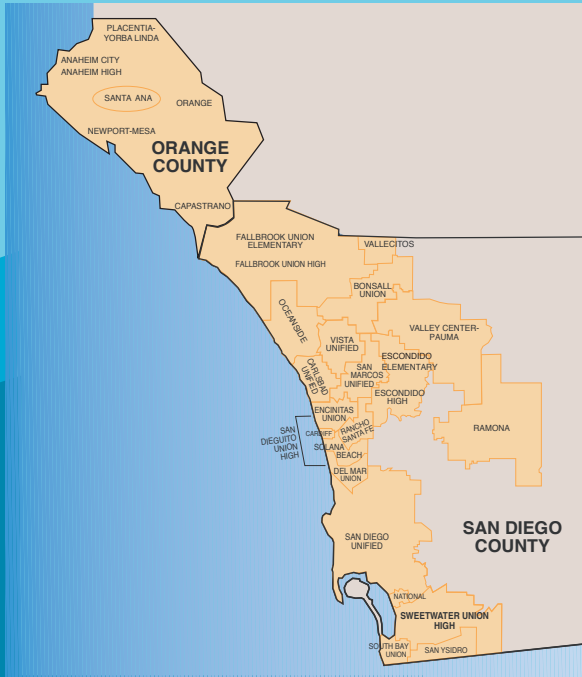


Our Program

Migrant Education is a federally funded program, authorized through the federal Every Student Succeeds Act (ESSA), designed to provide supplementary educational and support services to identified migrant students. Region 9 is administered through the San Diego County Office of Education (SDCOE). Currently, Region 9 has a cumulative enrollment of approximately 4,000 students (ages 3 to 22) in 70+ school districts, charter schools, and private schools in San Diego and Orange counties.



Migrant Education - Region 9

North County Regional Education Center

255 Pico Ave., Suite 120

San Marcos, CA 92069

Identification & Recruitment

760-307-1655

Instruction

760-307-1396

Parent Engagement

760-307-1399

General Information

760-307-1399



www.sdcoe.net/migrated

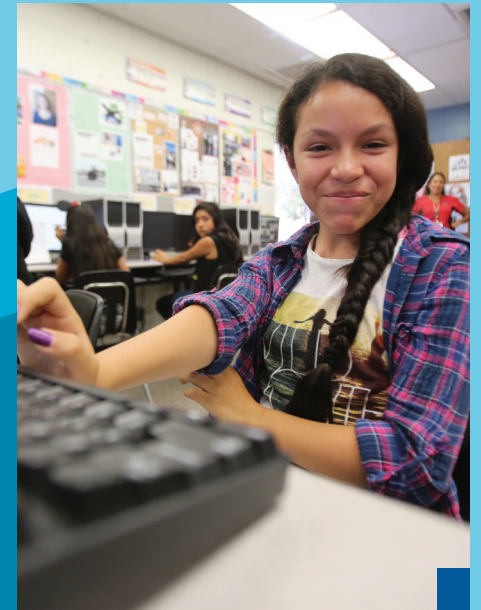


San Diego County Superintendent of Schools
Dr. Paul Gothold

San Diego County Board of Education
Paulette Donnellon Guadalupe González
Alicia Muñoz Gregg Robinson Rick Shea

Migrant Education Program

Region 9



*Supporting Student
Academic Achievement
in San Diego and Orange Counties*



Migrant Education Program
Region 9
Administered by





Our Vision

To improve the lives of migrant students through education in San Diego and Orange Counties.



Our Services

In collaboration with school districts and other community agencies, the program staff works to maximize the potential of migrant students. MEP staff work with migrant parents to design a plan of services for their child to ensure equitable opportunities and to increase graduation rates.

The migrant student is required, as is any other student, to meet state and district-adopted academic and student performance standards. Meeting these standards can be challenging for many migrant students because they typically move frequently for economic necessity and often have limited English language skills. The primary goal of the Migrant Education Program is to remove educational barriers and assist students and help students prepare for college and career.

To address these needs, the Migrant Education Program provides the following services:

- In-home assessment of family needs
- Supplemental school supplies
- Preschool programs/Kinder Readiness
- Literacy and math support services
- Leadership academies and higher education workshops
- Credit recovery and accrual programs/ services to Out of School Youth (OSY)
- Academic, career, and personal guidance
- Intersession and summer school services
- Proactive parenting skills
- Effective participation in parent/teacher conferences
- Accessing community educational and health resources

Eligibility Requirements

A child is considered “migrant” if the parent or guardian is a migratory worker in the agricultural, lumber, or fishing industries and if the child has moved with a qualifying family member during the past three years. A “qualifying” move can range from moving across district boundaries or from one state to another for the purpose of finding temporary or seasonal work.

A young adult may also qualify if he/she has moved on his/her own for the same reasons. The eligibility period is three years from the date of the last move. *Eligibility is established through an interview conducted by a recruiter of the Migrant Education Program.*

